

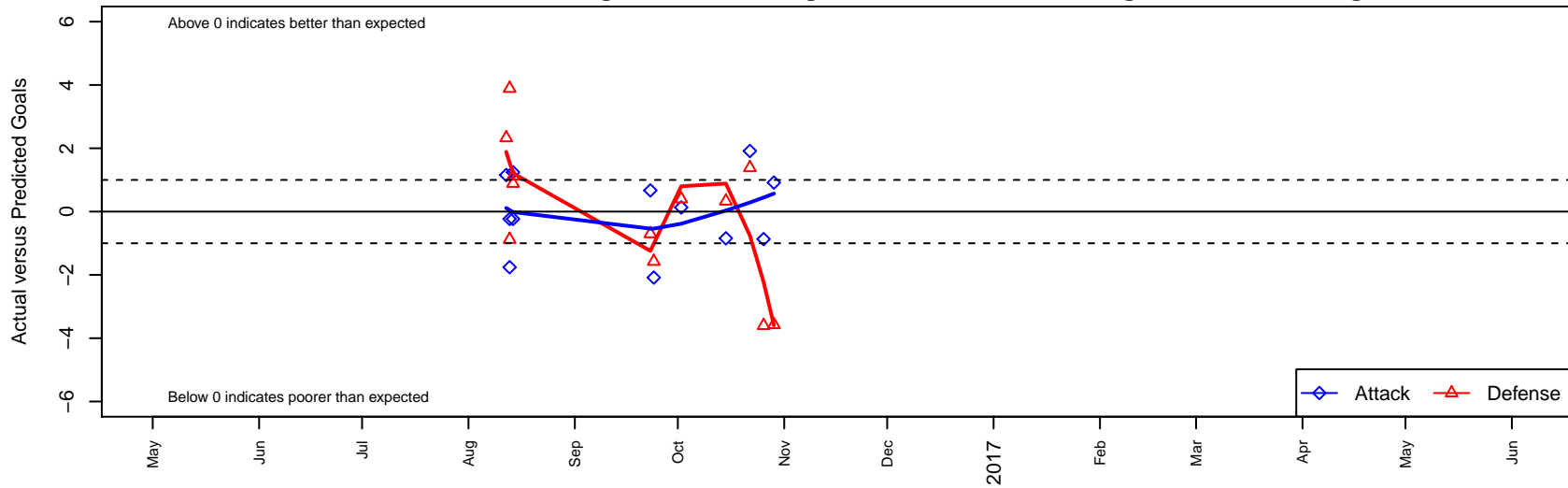
SSC Shadow United B02

Spokane SC Shadow
 Spokane, WA
 B02 total strength=943
 attack=2.75 defense=0.98
 fall league = IPL East U15
 notes= Vierra 2016

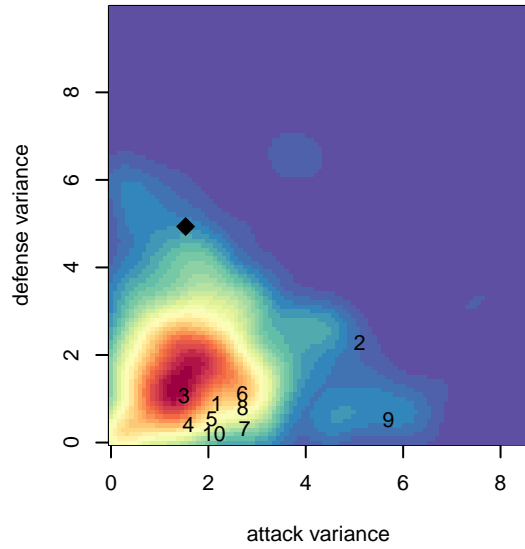
alt names used:
 SSC SHADOW UNITED B02 VIERRA
 SSC SHADOW UNITED B02 (WA)

Venues played:
 2016 Les Schwab NW Cup U15
 2016 IPL East U15

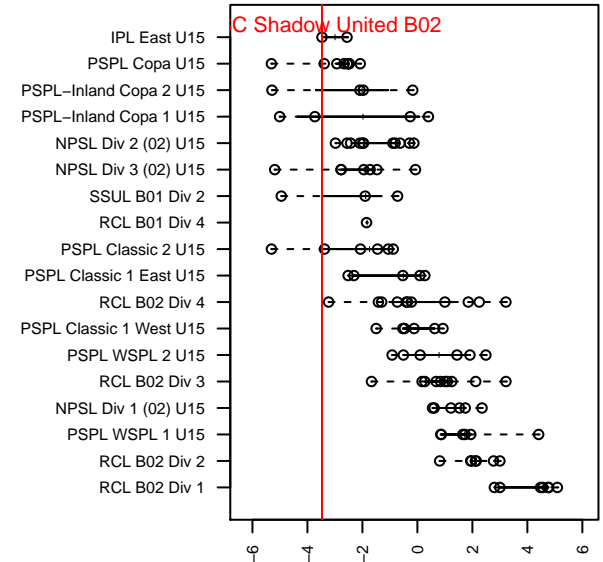
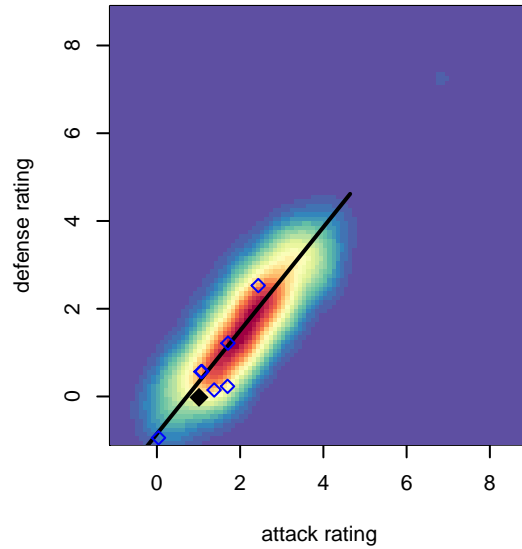
SSC Shadow United B02
 Dots are actual minus expected GF (blue circles) and GA (red triangles).
 Blue line is smoothed change in attack strength. Red is smoothed change in defense strength.



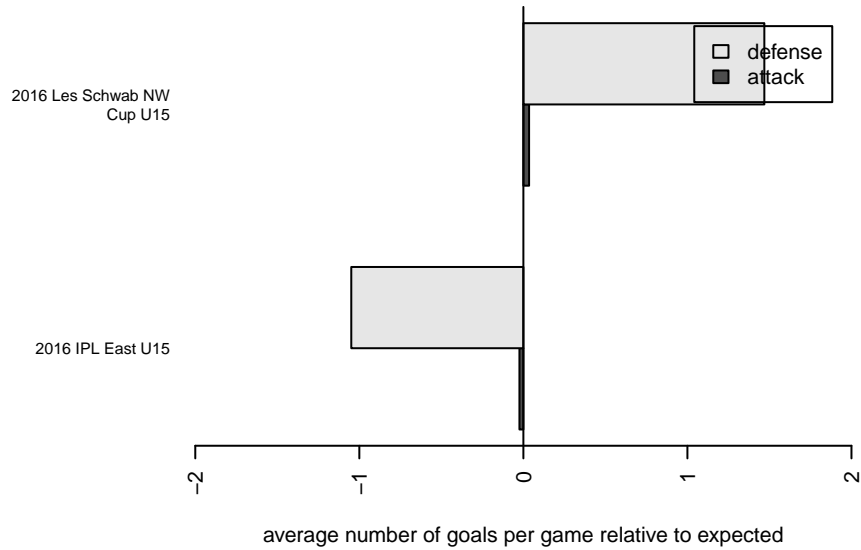
**attack and defense variance (black dot)
relative to other teams
and top 10 in region**



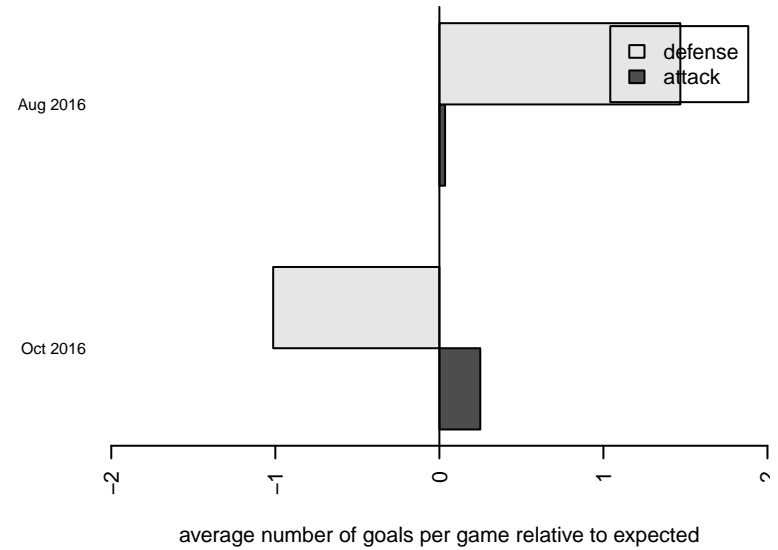
**attack and defense rating
relative to others at age
and all opponents in last 13 months**



Performance relative to 13 month average



Performance relative to 13 month average



date	home		away		venue	pred.home	pred.away
2016-10-29	VYSA B01	9	SSC Shadow United B02	3	2016 IPL East U15	5.42	2.08
2016-10-26	Sting SC Timbers B02	9	SSC Shadow United B02	0	2016 IPL East U15	5.40	0.87
2016-10-22	SSC Shadow United B02	4	Sandpoint Strikers B02	2	2016 IPL East U15	2.09	3.38
2016-10-15	FC Spokane Black Lee B02	3	SSC Shadow United B02	1	2016 IPL East U15	3.33	1.84
2016-10-02	SSC Shadow United B02	1	Sting SC Timbers B02	5	2016 IPL East U15	0.87	5.40
2016-09-24	SSC Shadow United B02	0	VYSA B01	7	2016 IPL East U15	2.08	5.42
2016-09-23	SSC Shadow United B02	7	Sting SC Timbers White B03	2	2016 IPL East U15	6.33	1.30
2016-08-14	3 Rivers Green B02	2	SSC Shadow United B02	3	2016 Les Schwab NW Cup U15	3.12	1.76
2016-08-14	Spokane Sounders B B02	9	SSC Shadow United B02	0	2016 Les Schwab NW Cup U15	9.89	0.23
2016-08-13	SSC Shadow United B02	0	Spokane Sounders B B02	6	2016 Les Schwab NW Cup U15	0.23	9.89
2016-08-13	SSC Shadow United B02	0	3 Rivers Green B02	4	2016 Les Schwab NW Cup U15	1.76	3.12
2016-08-12	FC Spokane Black Lee B02	1	SSC Shadow United B02	3	2016 Les Schwab NW Cup U15	3.33	1.84